



SPOTLIGHT ON INNOVATION

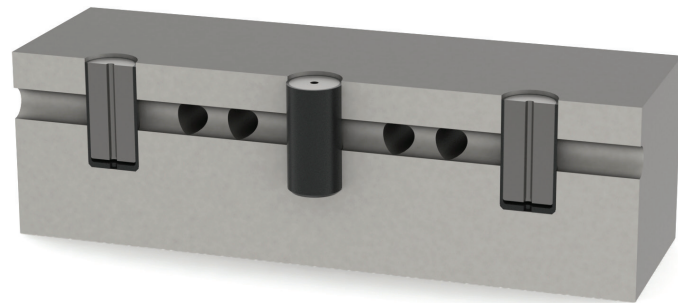


LEE CROSS PORT PLUGS

Lee Cross Port Plugs are a plugging solution specifically engineered to seal cross port passageways. This configuration is a variant of the original Lee Plug[®] that set industry standards over 65 years ago. A smooth wall design combined with the field-proven controlled expansion principle creates a permanent, leak-proof seal, without the need for o-rings or sealants. Installation is simple, reliable, and requires no maintenance.

Lee Cross Port Plugs are constructed from 6Al-4V Titanium. They have been qualified for proof pressures over 20,000 psi and at temperatures up to 400°F. Configurations are available in .250, .281, and .343 inch diameters.

Lee Cross Port Plugs are ideal for isolating sections of a fluidic manifold. They are also used to plug deep passageways that are difficult to access with conventional sealing methods. Typical applications are found in down-hole oil drilling, wireline and completion tools, as well as in aircraft, high performance race cars, or anywhere else a leak-proof seal may be required.



PERFORMANCE

- Proof Pressures over 20,000 psi
- Available in 0.250", 0.281" and 0.343" Sizes
- Temperatures Up To 400°F

APPLICATIONS

- Isolating Sections of a Fluidic Manifold
- Sealing Passageways Inaccessible To Conventional Sealing Methods

**PROVIDES PERMANENT, LEAK-PROOF
SEAL FOR CROSS PORT PASSAGeways.**

THE LEE COMPANY

2 Pettipaug Road, P.O. Box 424, Westbrook, Connecticut 06498-0424
Tel: 860-399-6281 • Fax: 860-399-7037 • inquiry@theleeco.com