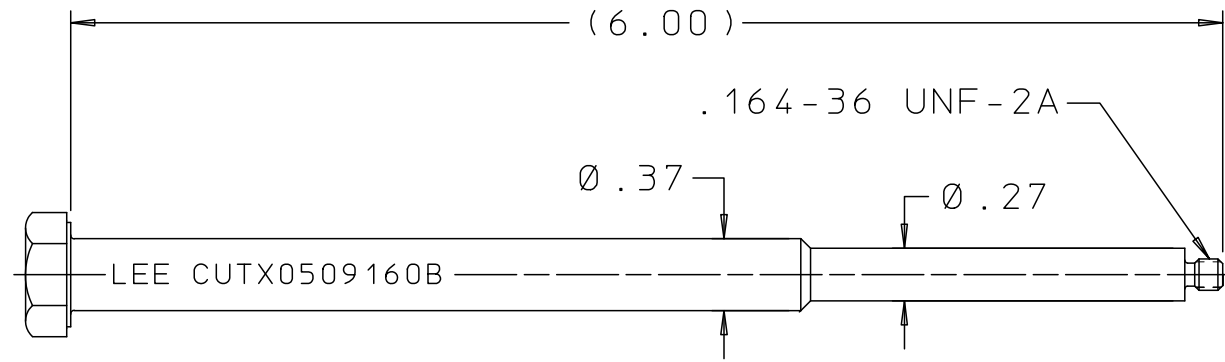
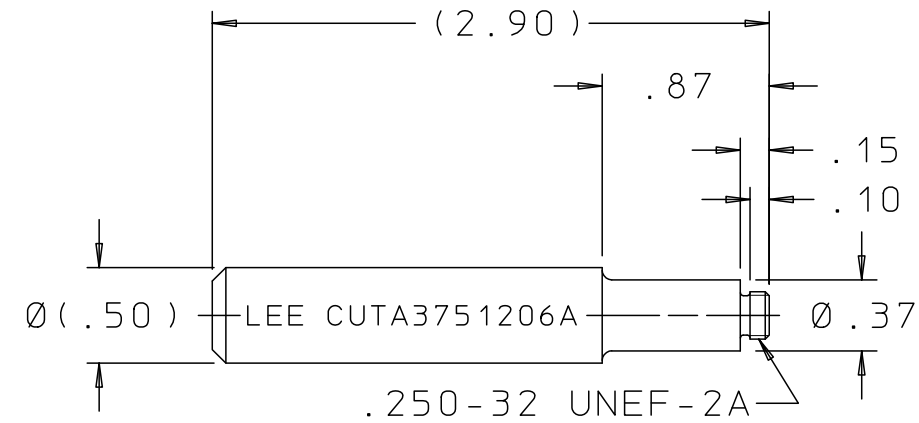


CUTX0509150B

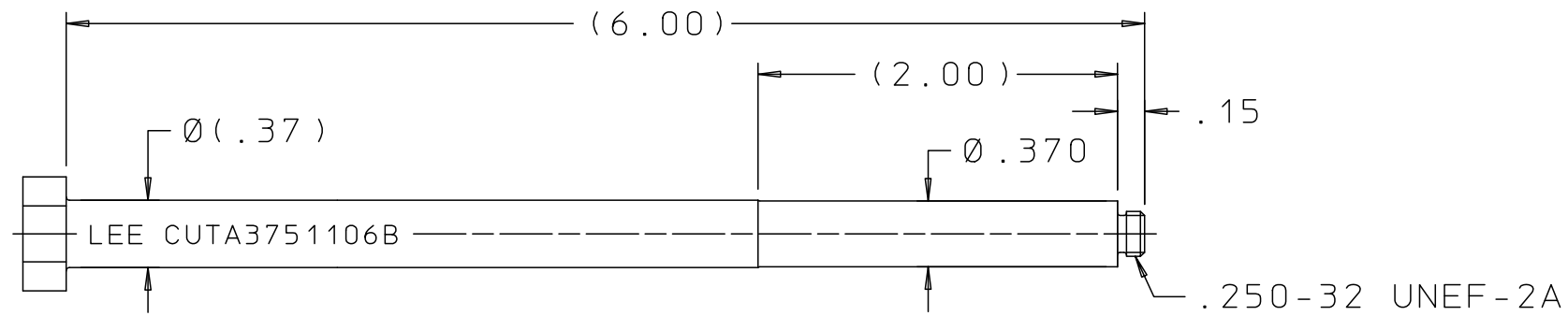
REV	DATE	BY	DESCRIPTION
A	01-26-10	KD	INITIAL RELEASE
B	10-25-13	KD	PIN EXTR TOOL: REMOVED HEX, ADDED 2 FLATS, .15 & (2.00). Ø.370 WAS Ø.37. NOSE EXTR TOOL: REMOVED HEX, ADDED 2 FLATS & (2.95). PIN INSTAL TOOL: ADDED .87, .15 & .10. (2.90) WAS 2.90 & Ø(.50) WAS Ø.50. STRIKER: Ø(2.00) WAS Ø2.00 & (1.38) WAS 1.38.



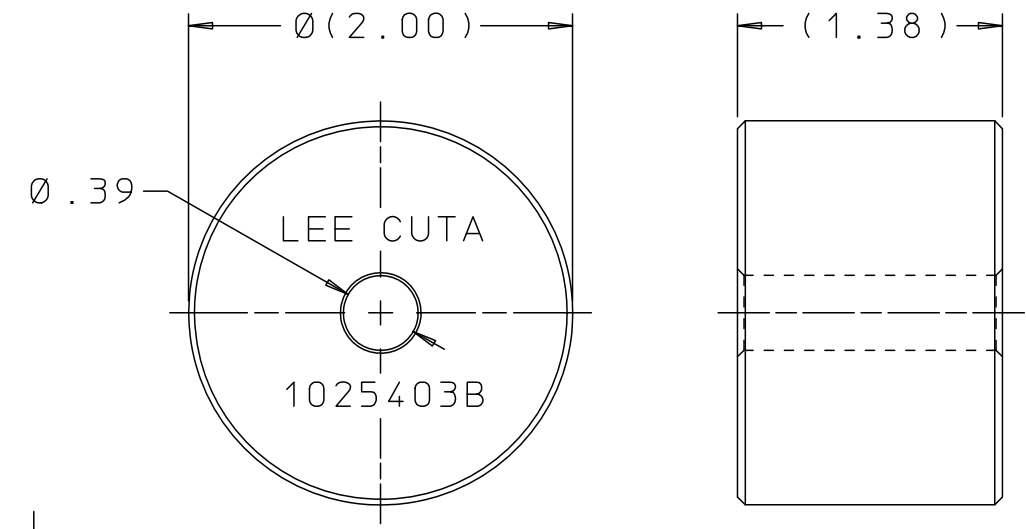
BODY INSTALLATION/EXTRACTION TOOL



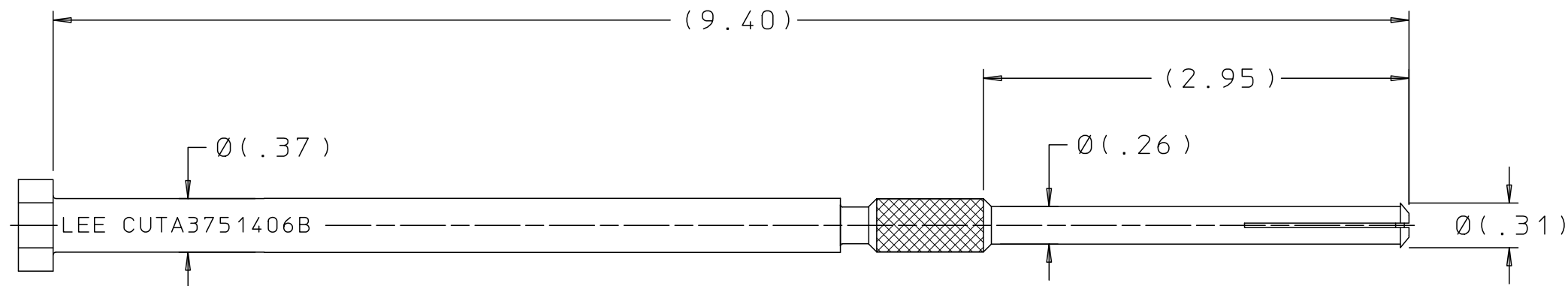
PIN INSTALLATION TOOL




PIN EXTRACTION TOOL



STRIKER



NOSE EXTRACTION TOOL

PROPRIETARY ITEM This document contains proprietary information and is submitted upon the express condition that the information contained herein will not be used directly or indirectly in any way detrimental to the interests of The Lee Company, and/or in violation of regulation DAR 7-104.9(a)(1 July 1974), et seq.	CUSTOMER APPROVAL NAME _____ TITLE _____ SIGNATURE _____ DATE _____		FMF THE LEE COMPANY WESTBROOK, CT	DWG NO: CUTX0509150B NOTES AND DIMENSIONS SHOWN HERE ON ARE FOR INSPECTION IDENTIFICATION ONLY. ALL MANUFACTURING RIGHTS RESERVED. EXTERNAL CORNER RAD: INTERNAL FILLET RAD: SURFACE FINISH ✓ ALL OVER DIMENSIONS ARE IN INCHES TOLERANCES 2 PLACES ±.015 3 PLACES ±.005 ANGLES ±5°	DRAWN BY: K D 01-26-10 CHK'D BY: H M 01-28-10 APP'D BY: B B 02-28-10	LEE TOOL SET, INSTALLATION AND EXTRACTION .375 BYPASS
			CUTD0509150 REFERENCE		MAT: H.T.: FINISH:	 THE LEE COMPANY WESTBROOK, CT 06498
					SIZE: B CAGE CODE: 92555 DWG NO.: CUTX0509150B REV: B	DWG SCALE: NONE SHEET 1 OF 1