

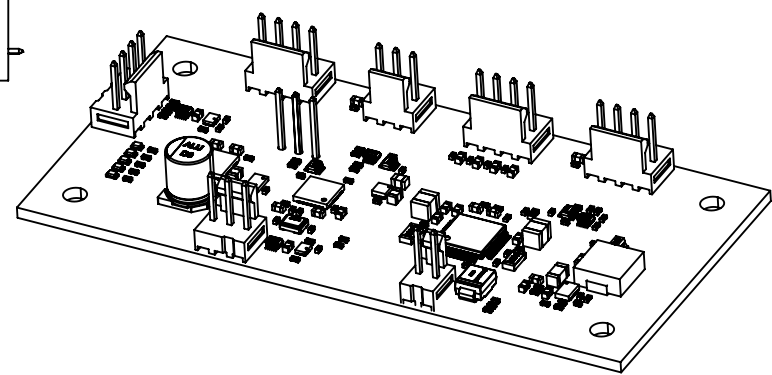
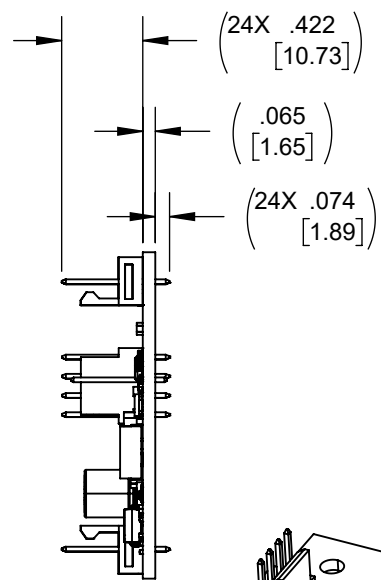
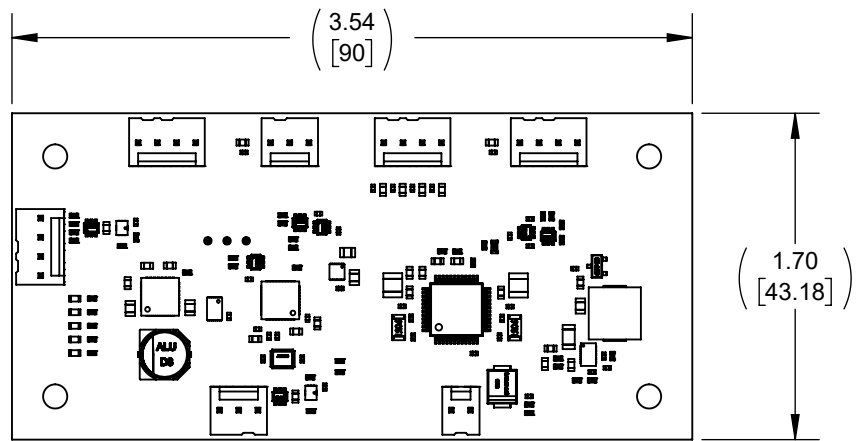


DWG NO. **LSWX0307810A** REV. **A1**

PROPRIETARY NOTICE
This document contains confidential, trade secret information which is proprietary to The Lee Company, and is submitted upon the express condition that neither it, nor our products, will be used directly or indirectly in any way detrimental to the interests of The Lee Company, such as disclosure to others or replication of our products, and/or in violation of 18 U.S.C. 1905 (TSA), 5 U.S.C. 552 (FOIA), E.O. 12600 of 6/23/87, 18 U.S.C. 1832, and C.G.S.A. (CT) Chapter 625 sec. 35-50 thru 35-58.

REV	DATE	BY	DESCRIPTION
A1	11/04/2024	DKR	INITIAL RELEASE

B



B

- ① NOTES:
1. AMBIENT TEMPERATURE: +4C TO 66C (40F TO 150F).
 2. STORAGE TEMPERATURE: -40C TO 66C (-40F TO 150F).
 3. FUNCTIONALITY WITH FTDI PART NUMBER TTL-232R-RPI HAS BEEN CONFIRMED BY THE LEE COMPANY.
 4. CONTACT LOCAL SALES REPRESENTATIVE FOR QUICK START GUIDE LSOC0002338.

A

A

-FMF- THE LEE COMPANY ESSEX, CT	DIMENSIONING AND TOLERANCING IN ACCORDANCE WITH ASME Y14.5-2009. DO NOT SCALE DRAWING. UNLESS OTHERWISE SPECIFIED (UOS): DIMENSIONS ARE IN INCHES. [mm] ARE FOR REFERENCE ONLY.			DRAWN BY	DKR	11/01/2024	TITLE DRIVER BOARD-VVP	
	TOLERANCES: .XX ± .015 .XXX ± .005 .XXXX ± .001 ANGLES ± 5° EXTERNAL CORNER: .01 MAX BREAK INTERNAL CORNER: .01 MAX BREAK SURFACE FINISH $\sqrt{63}$			CHECKED BY	JAC	11/04/2024	The Lee Company 55 Bokum Rd., Essex, CT 06426 www.theleeco.com	
WARNING EXPORT CONTROLLED BY EAR [50 USC 2401] ECCN=EAR99			MATERIAL: SEE ABOVE	APPROVED BY	KE	11/11/2024	SIZE	DWG NO.
NOTES AND DIMENSIONS SHOWN HEREIN ARE FOR INSPECTION IDENTIFICATION ONLY ALL MANUFACTURING RIGHTS ARE RESERVED			THIRD ANGLE PROJECTION				A	LSWX0307810A
REF. NO: LSWD0307810							REV.	A1
				SCALE: 1:1	CODE IDENT NO. ONZR4		SHEET 1 OF 1	