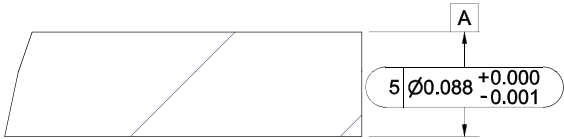
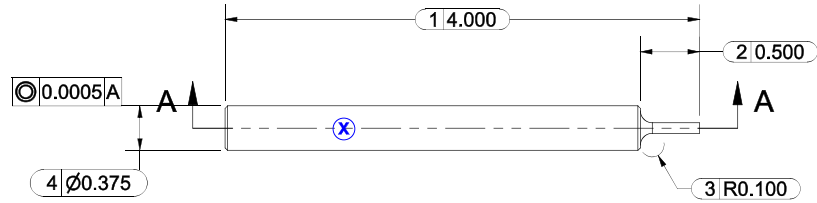
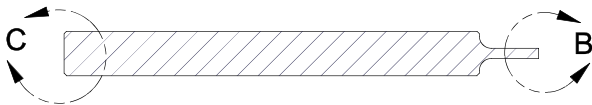


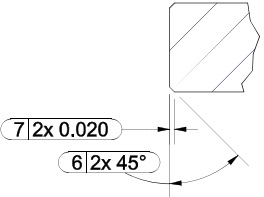
Revision Info.	
Rev	Change Description
B2	MINOR REVISION ~ Added concentricity call out



DETAIL B
SCALE 10 : 1




SECTION A-A
SCALE 1 : 1



DETAIL C
SCALE 2 : 1

- NOTES:
1. REMOVE ALL BURRS AND SHARP EDGES.
 2. MARK WITH PART NUMBER AND REVISION LETTER. (X)
 3. NO VENDOR MARKING PERMITTED.

THIRD ANGLE PROJECTION	UNLESS OTHERWISE SPECIFIED EXTERNAL RADIUS R INTERNAL FILLET R SURFACE FINISH MAXIMUM	Author Vernon, Jon Origination Date 10/28/2005 Modification Date 7/17/2023	 The Lee Company Industrial Microhydraulics Group Technical Center Westbrook, CT 06498 / U.S.A.	
CODE IDENT NO. NUMBER OS730	CRITICAL CHARACTERISTICS	MATL A2 Tool Steel	TITLE: INSTALLATION TOOL, 2.5mm RESTRICTOR	
Sheet Size B	PROPRIETARY ITEM This document contains proprietary information and is submitted upon the express condition that the information contained herein will not be used directly in any way detrimental to the interests of The Lee Company and/or in violation of regulation D.A.R. 7-104-9 (b) (1 July 1974), et seq.	H.T. Rc 50-60	FINISH	DO NOT SCALE DRAWING
		DIMENSIONS ARE IN INCHES TOLERANCES		-FMF / Used On- -Lee Chek 2.5mm Restrictor
		2PL ±.01	3PL ±.003	4PL ±.0010
		ANG ±2°	Part Number CCRT0029354S REV. State Released	
		SHEET 1 of 1		REV. B2 SCALE: 1:1